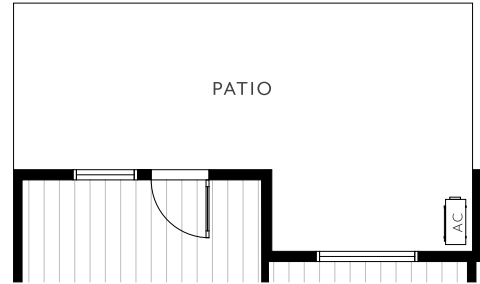
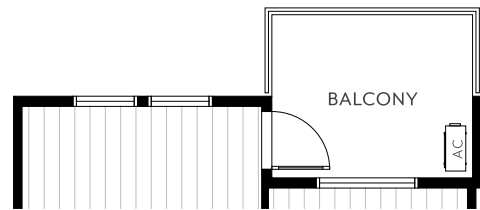


A 1 BEDROOM + DEN, 1 BATH
 INTERIOR 606 SQ FT

BUILDING ONE



LEVEL 1*



LEVEL 2*

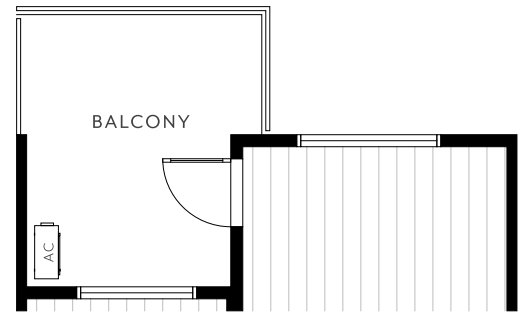
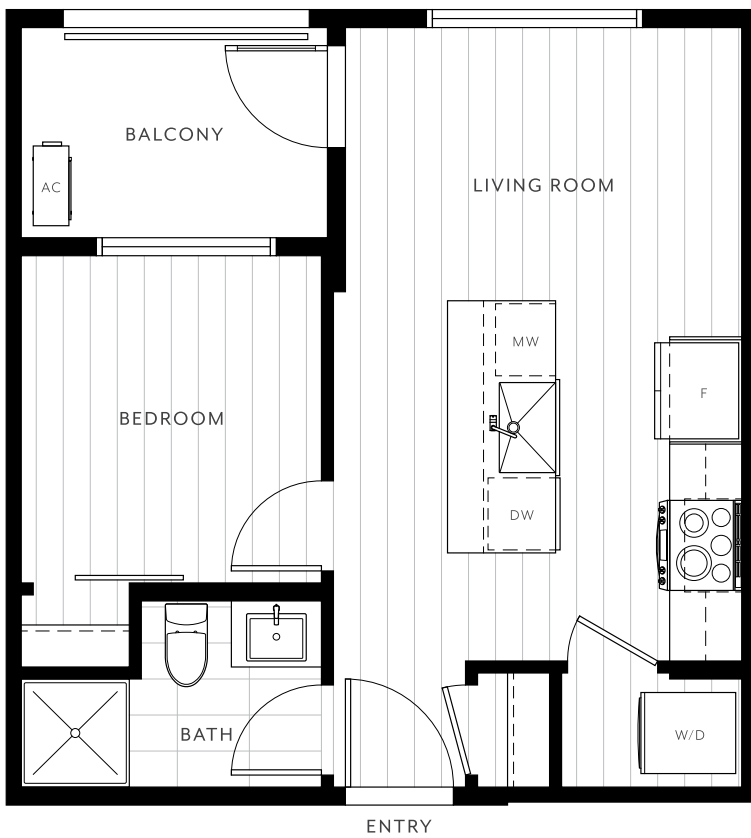


* Patio, window, and appliance dimensions may vary. Raised ceilings are available in select homes. For further details, please see a sales representative and refer to the architectural plans.

In our continuing effort to improve and maintain the high standard of the Guilden development, the developer reserves the right to modify or change plans, layouts, specifications, features, including appliances, and prices without notice. Materials may be substituted with equivalent or better at the developer's sole discretion. All dimensions and sizes are approximate and are based on architectural measurements. As reverse, flipped and/or mirrored plans occur throughout the development please see architectural plans for current unit layout, if material to your decision to purchase. Illustrations, renderings and marketing materials provided are an artist's conception and are intended as a general reference only, all subject to change without prior notice and not to be relied upon. Patio dimensions may vary, and raised ceilings are available in select homes. For further details, please see a sales representative and refer to the architectural plans. Please ask one of the helpful sales staff to reference the current architectural set of construction drawings for the most accurate dimensions and other details at time of sale. E.&O.E. Sales & Marketing provided by Magnum Projects Ltd. 604-569-3900

B 1 BEDROOM, 1 BATH
INTERIOR 403 SQ FT

BUILDING ONE



HOMES 317, 417, 517*



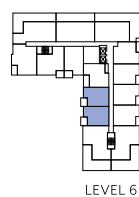
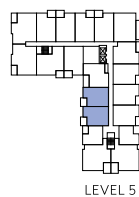
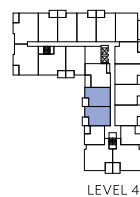
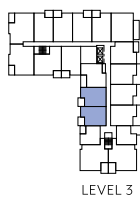
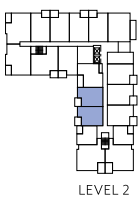
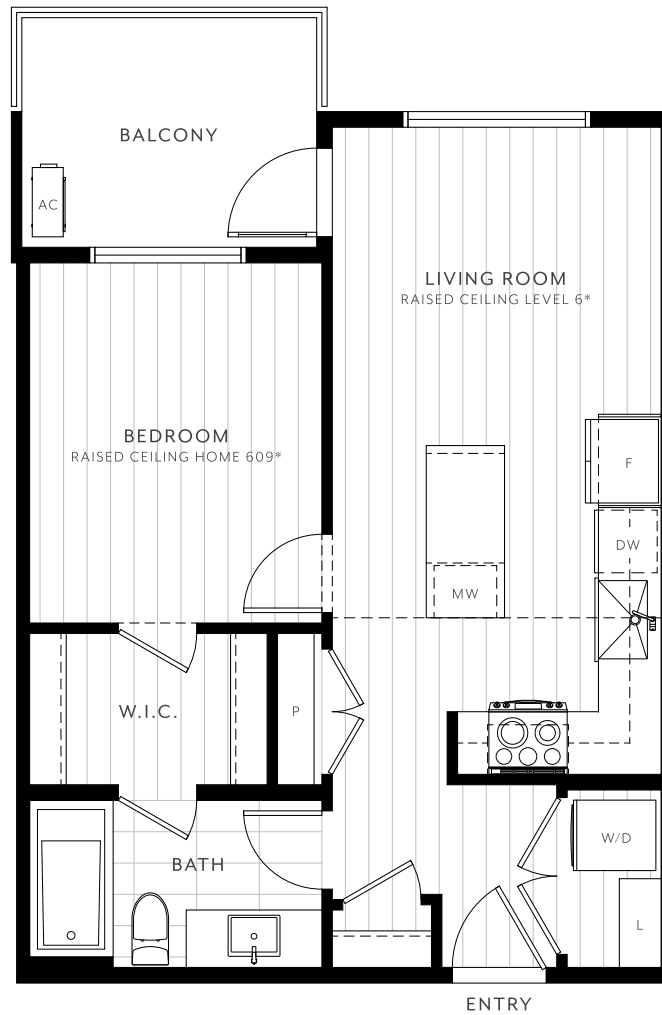
* Patio and window dimensions may vary. Raised ceilings are available in select homes. For further details, please see a sales representative and refer to the architectural plans.

In our continuing effort to improve and maintain the high standard of the Guilden development, the developer reserves the right to modify or change plans, layouts, specifications, features, including appliances, and prices without notice. Materials may be substituted with equivalent or better at the developer's sole discretion. All dimensions and sizes are approximate and are based on architectural measurements. As reverse, flipped and/or mirrored plans occur throughout the development please see architectural plans for current unit layout, if material to your decision to purchase. Illustrations, renderings and marketing materials provided are an artist's conception and are intended as a general reference only, all subject to change without prior notice and not to be relied upon. Patio dimensions may vary, and raised ceilings are available in select homes. For further details, please see a sales representative and refer to the architectural plans. Please ask one of the helpful sales staff to reference the current architectural set of construction drawings for the most accurate dimensions and other details at time of sale. E.&O.E. Sales & Marketing provided by Magnum Projects Ltd. 604-569-3900

E

1 BEDROOM, 1 BATH
INTERIOR 543 SQ FT

BUILDING ONE

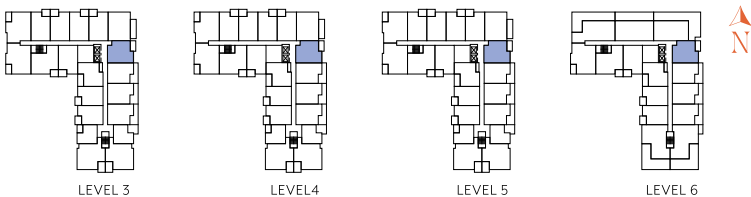
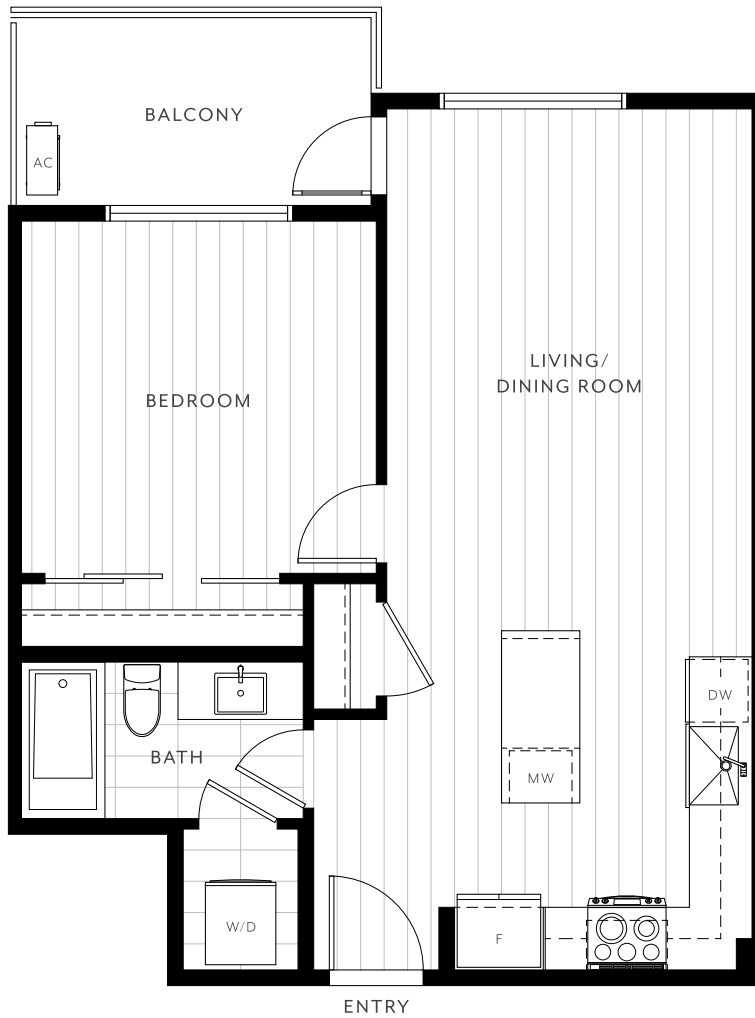


* Patio and window dimensions may vary. Raised ceilings are available in select homes. For further details, please see a sales representative and refer to the architectural plans.

In our continuing effort to improve and maintain the high standard of the Guilden development, the developer reserves the right to modify or change plans, layouts, specifications, features, including appliances, and prices without notice. Materials may be substituted with equivalent or better at the developer's sole discretion. All dimensions and sizes are approximate and are based on architectural measurements. As reverse, flipped and/or mirrored plans occur throughout the development please see architectural plans for current unit layout, if material to your decision to purchase. Illustrations, renderings and marketing materials provided are an artist's conception and are intended as a general reference only, all subject to change without prior notice and not to be relied upon. Patio dimensions may vary, and raised ceilings are available in select homes. For further details, please see a sales representative and refer to the architectural plans. Please ask one of the helpful sales staff to reference the current architectural set of construction drawings for the most accurate dimensions and other details at time of sale. E.&O.E. Sales & Marketing provided by Magnum Projects Ltd. 604-569-3900

F 1 BEDROOM, 1 BATH
 INTERIOR 622 SQ FT

BUILDING ONE

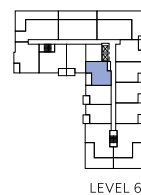
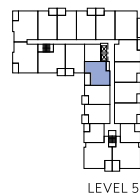
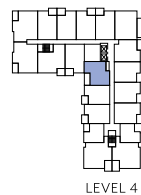
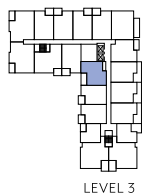
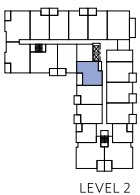
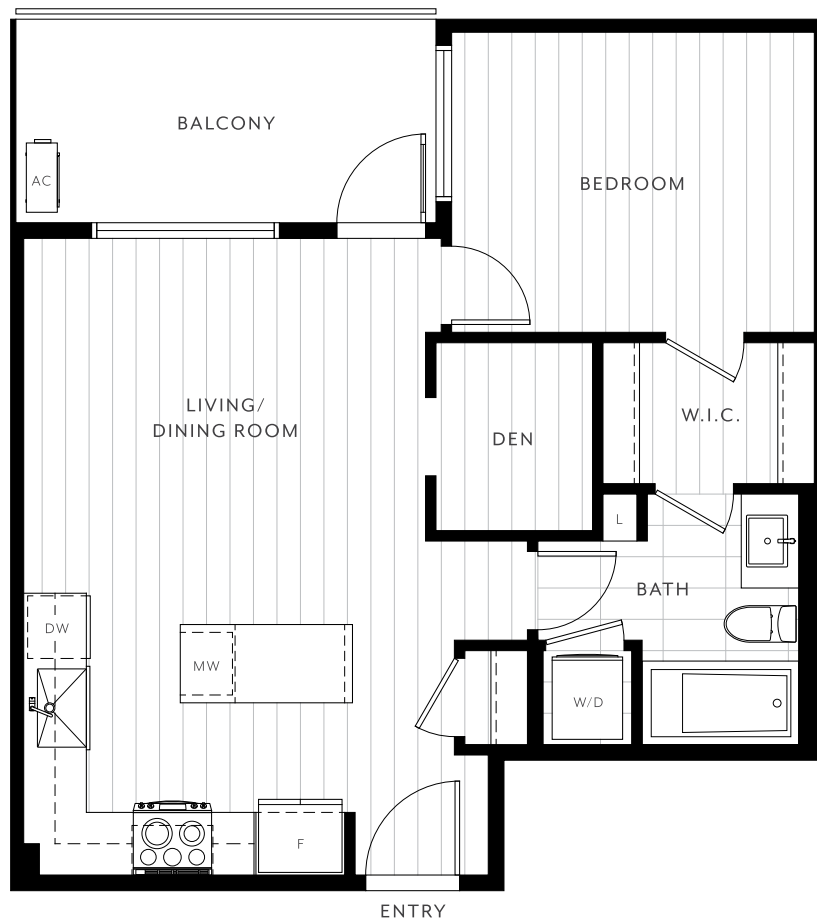


In our continuing effort to improve and maintain the high standard of the Guilden development, the developer reserves the right to modify or change plans, layouts, specifications, features, including appliances, and prices without notice. Materials may be substituted with equivalent or better at the developer's sole discretion. All dimensions and sizes are approximate and are based on architectural measurements. As reverse, flipped and/or mirrored plans occur throughout the development please see architectural plans for current unit layout, if material to your decision to purchase. Illustrations, renderings and marketing materials provided are an artist's conception and are intended as a general reference only, all subject to change without prior notice and not to be relied upon. Patio dimensions may vary, and raised ceilings are available in select homes. For further details, please see a sales representative and refer to the architectural plans. Please ask one of the helpful sales staff to reference the current architectural set of construction drawings for the most accurate dimensions and other details at time of sale. E.&O.E. Sales & Marketing provided by Magnum Projects Ltd. 604-569-3900

G

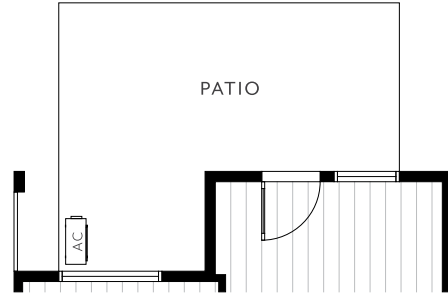
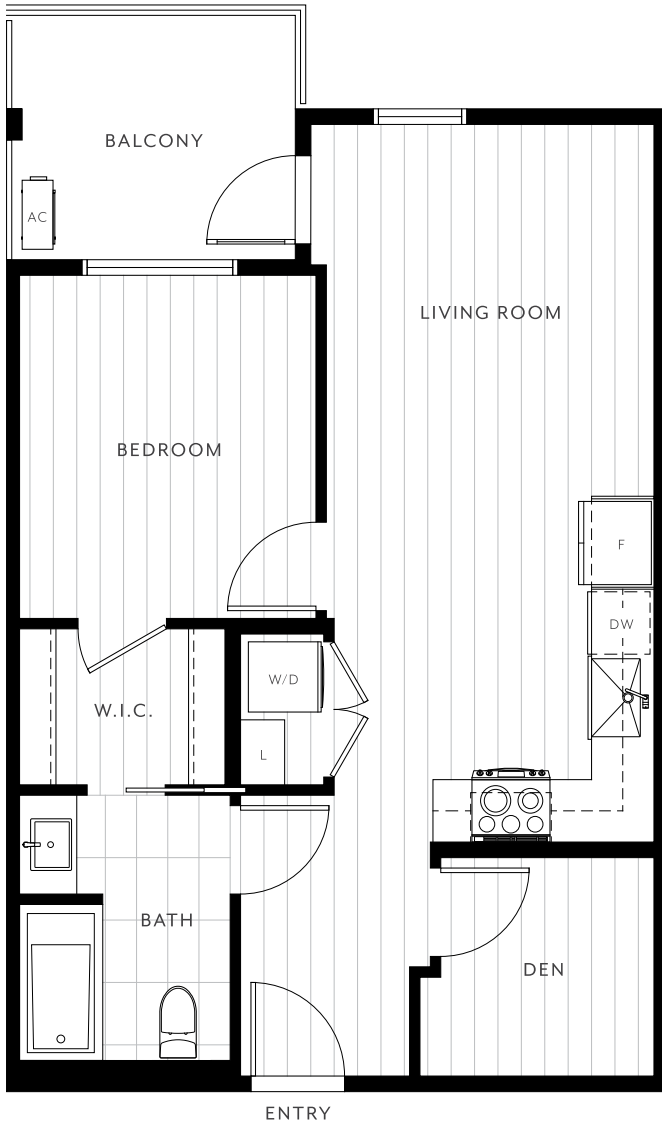
1 BEDROOM + DEN, 1 BATH
INTERIOR 594 SQ FT

BUILDING ONE

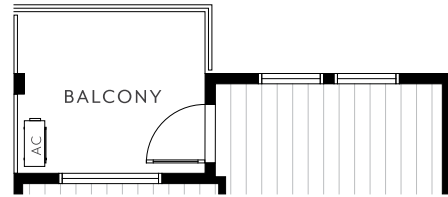


J 1 BEDROOM + DEN, 1 BATH
 INTERIOR 622 SQ FT
 ADAPTABLE UNIT*

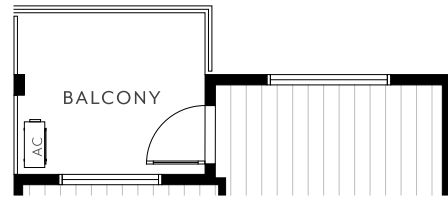
BUILDING ONE



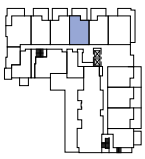
LEVEL 1**



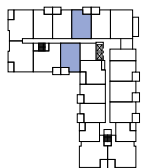
LEVEL 2**



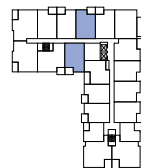
LEVEL 3, 4, 5**



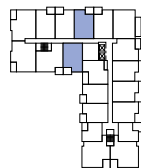
LEVEL 1



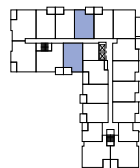
LEVEL 2



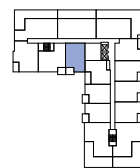
LEVEL 3



LEVEL 4



LEVEL 5



LEVEL 6



* Adaptable unit. Contact our sales team for details.

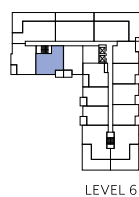
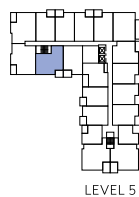
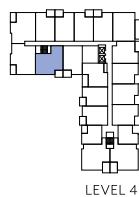
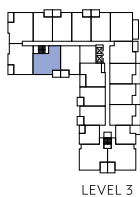
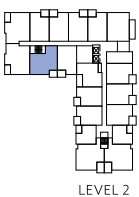
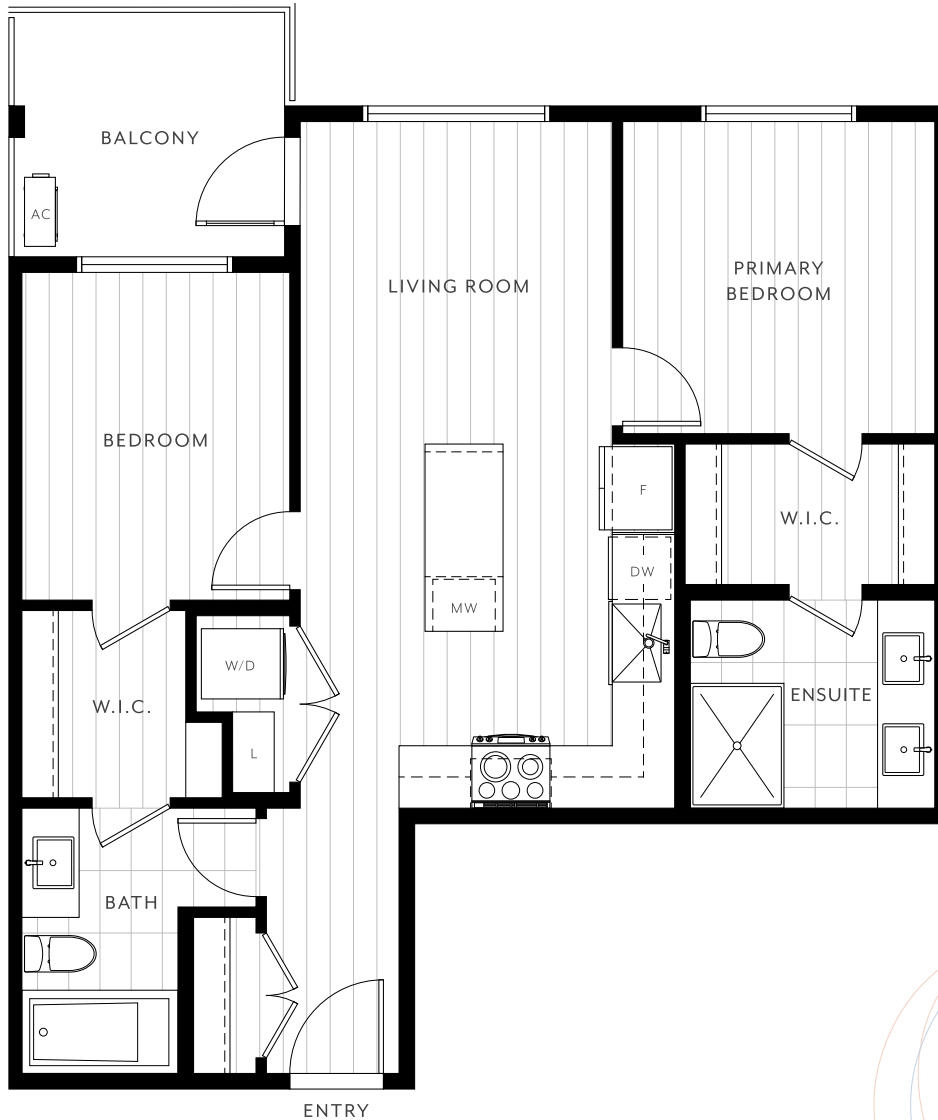
** Patio, window, and appliance dimensions may vary. Raised ceilings are available in select homes. For further details, please see a sales representative and refer to the architectural plans.

In our continuing effort to improve and maintain the high standard of the Guilden development, the developer reserves the right to modify or change plans, layouts, specifications, features, including appliances, and prices without notice. Materials may be substituted with equivalent or better at the developer's sole discretion. All dimensions and sizes are approximate and are based on architectural measurements. As reverse, flipped and/or mirrored plans occur throughout the development please see architectural plans for current unit layout, if material to your decision to purchase. Illustrations, renderings and marketing materials provided are an artist's conception and are intended as a general reference only, all subject to change without prior notice and not to be relied upon. Patio dimensions may vary, and raised ceilings are available in select homes. For further details, please see a sales representative and refer to the architectural plans. Please ask one of the helpful sales staff to reference the current architectural set of construction drawings for the most accurate dimensions and other details at time of sale. E.&O.E. Sales & Marketing provided by Magnum Projects Ltd. 604-569-3900

K

2 BEDROOM, 2 BATH
INTERIOR 759 SQ FT

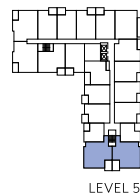
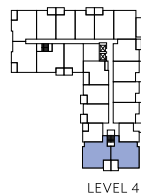
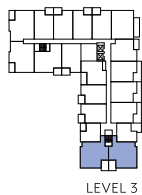
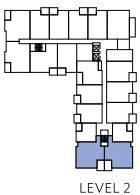
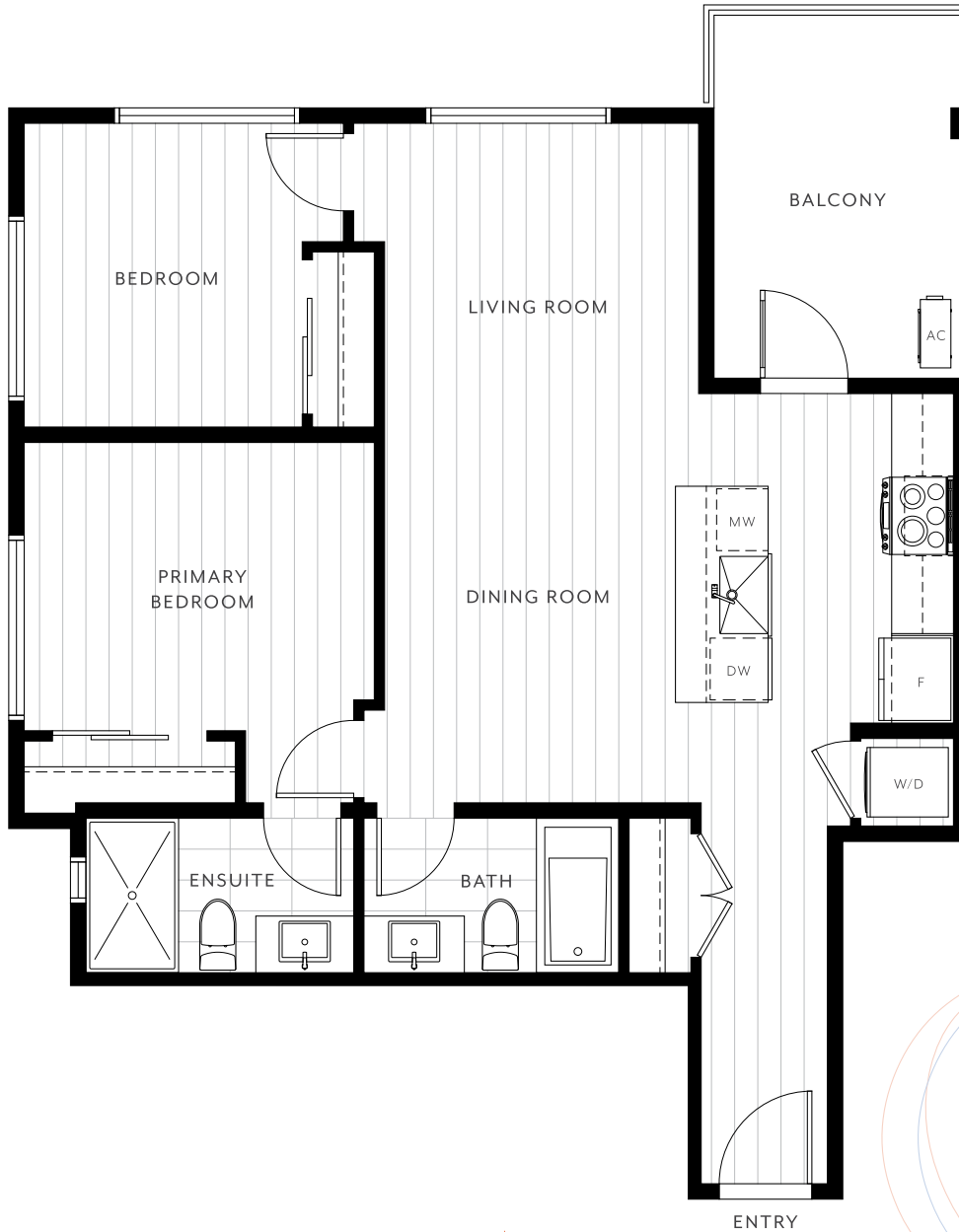
BUILDING ONE



M

2 BEDROOM, 2 BATH
INTERIOR 815 SQ FT

BUILDING ONE



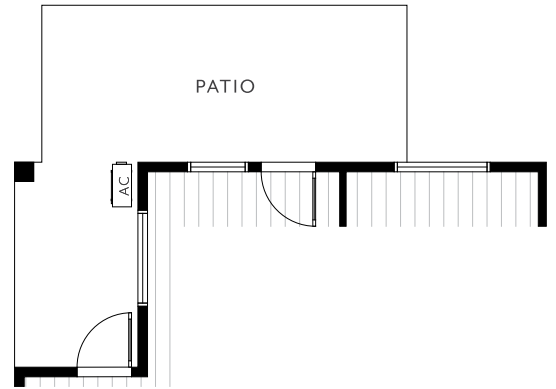
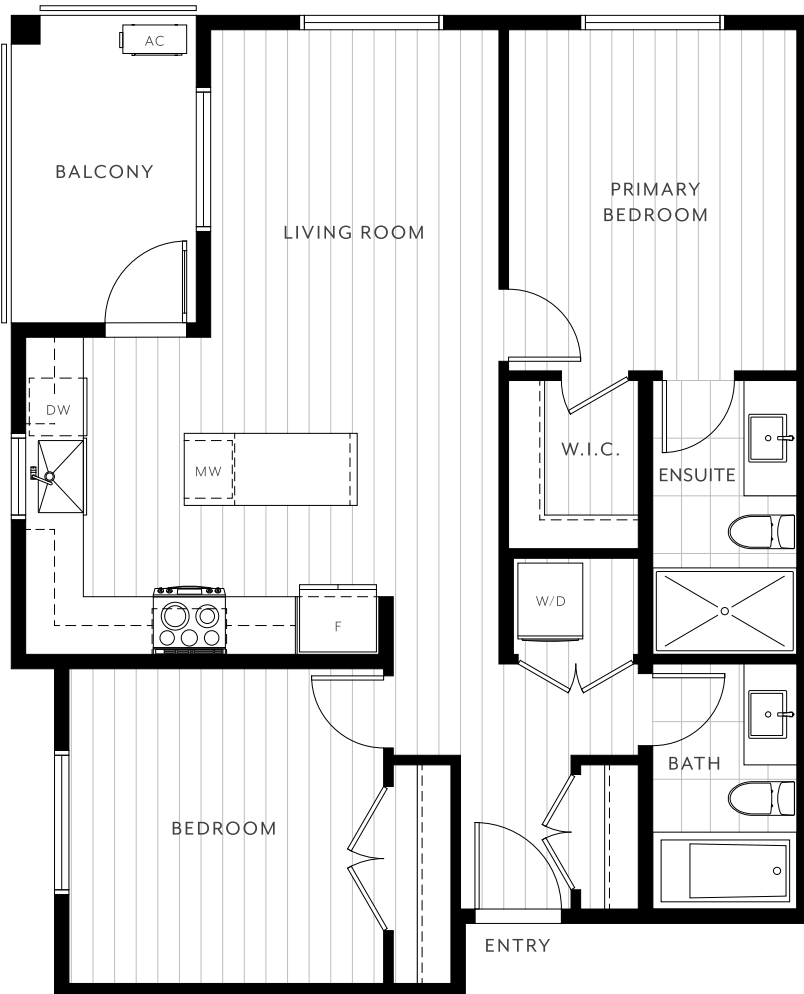
* Home 214 includes a secondary balcony. Contact our sales team for details.

In our continuing effort to improve and maintain the high standard of the Guilden development, the developer reserves the right to modify or change plans, layouts, specifications, features, including appliances, and prices without notice. Materials may be substituted with equivalent or better at the developer's sole discretion. All dimensions and sizes are approximate and are based on architectural measurements. As reverse, flipped and/or mirrored plans occur throughout the development please see architectural plans for current unit layout, if material to your decision to purchase. Illustrations, renderings and marketing materials provided are an artist's conception and are intended as a general reference only, all subject to change without prior notice and not to be relied upon. Patio dimensions may vary, and raised ceilings are available in select homes. For further details, please see a sales representative and refer to the architectural plans. Please ask one of the helpful sales staff to reference the current architectural set of construction drawings for the most accurate dimensions and other details at time of sale. E.&O.E. Sales & Marketing provided by Magnum Projects Ltd. 604-569-3900

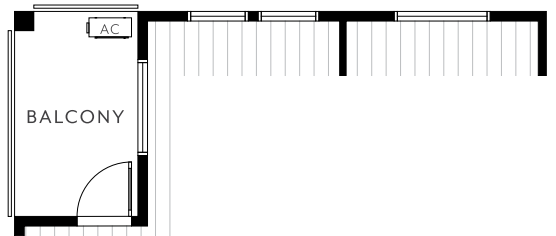
N

2 BEDROOM, 2 BATH
INTERIOR 825 SQ FT

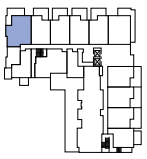
BUILDING ONE



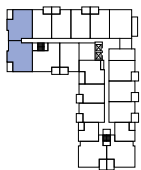
LEVEL 1*



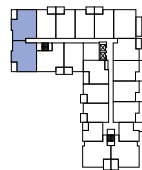
LEVEL 2*



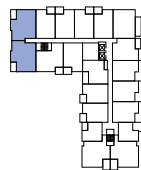
LEVEL 1



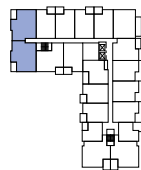
LEVEL 2



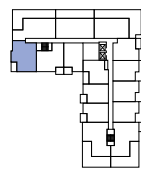
LEVEL 3



LEVEL 4



LEVEL 5



LEVEL 6



* Patio and window dimensions may vary. Raised ceilings are available in select homes. For further details, please see a sales representative and refer to the architectural plans.

In our continuing effort to improve and maintain the high standard of the Guilden development, the developer reserves the right to modify or change plans, layouts, specifications, features, including appliances, and prices without notice. Materials may be substituted with equivalent or better at the developer's sole discretion. All dimensions and sizes are approximate and are based on architectural measurements. As reverse, flipped and/or mirrored plans occur throughout the development please see architectural plans for current unit layout, if material to your decision to purchase. Illustrations, renderings and marketing materials provided are an artist's conception and are intended as a general reference only, all subject to change without prior notice and not to be relied upon. Patio dimensions may vary, and raised ceilings are available in select homes. For further details, please see a sales representative and refer to the architectural plans. Please ask one of the helpful sales staff to reference the current architectural set of construction drawings for the most accurate dimensions and other details at time of sale. E.&O.E. Sales & Marketing provided by Magnum Projects Ltd. 604-569-3900

SITE PLAN

BUILDING ONE

